



Custom Dynamics® UTV License Plate Mount Installation Instructions

We thank you for purchasing the Custom Dynamics® UTV license plate mount. Our products utilize the latest technology and high quality components to ensure you the most reliable service. We offer one of the best warranty programs in the industry and we back our products with excellent customer support, if you have questions before or during installation of this product please call Custom Dynamics® at 1(800) 382-1388.

Part Number: CD-UTV-LPF-MT

Package Contents:

- UTV Mounting Bracket (1)
- 1/4-20x 1" black cap screw (2)
- 1/4 SAE black flat washer (2)
- 1/4-20 nylon lock nut (2)



Fitment: Universal fitment designed for UTV & specialty vehicles needing mounting for standard 4 x 7 license plate



ATTENTION

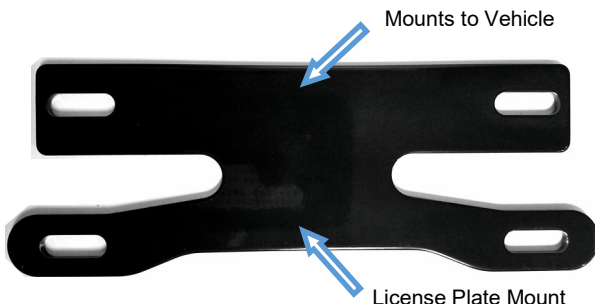
Please read all Information below before Installation

Safety First: Make sure vehicle is cool to the touch, parked on a level surface and will not move during installation.

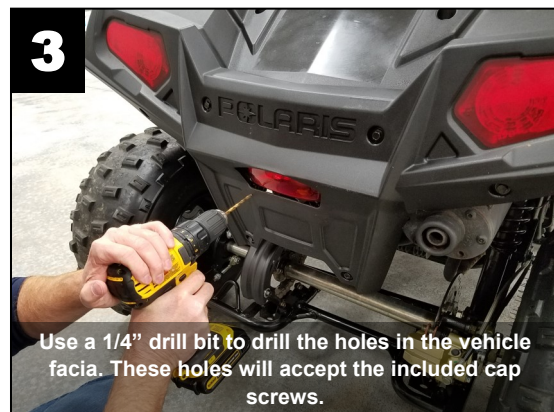
Warning: If using in conjunction with any DC power plate illumination, be sure to disconnect negative battery cable from battery; refer to owner's manual. Failure to do so can result in electrical shock, injury, or fire. Secure negative battery cable away from positive side of battery and all other positive voltage sources on vehicle.

Important: This product is designed for standard 4 x 7 size license plates and frames only.

Orientation

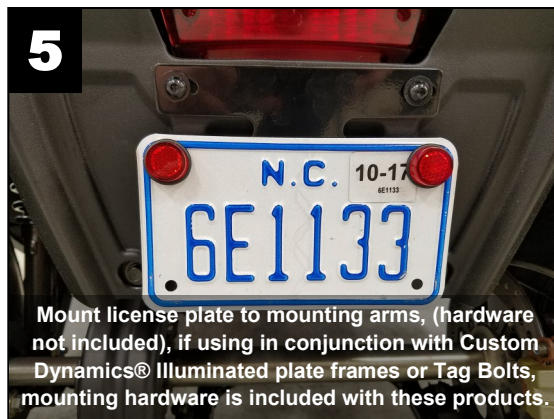
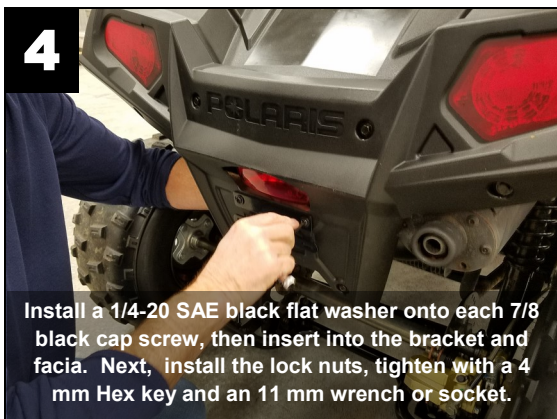


Installation



Questions? Call us at: 1 (800) 382-1388 M-TH 8:30AM-5:30PM / FR 9:30AM-5:30PM EST

Installation Instructions - Page 2



Lighting Accessories (Sold Separately)

Horizontal LED Illuminated Plate Frame
Part Number: 2030-0532 (LPF-HRZ-B-LP)



LED Illuminated Tag Bolts
Part Number: 2030-0534 (TB01B)



Everything to Light Up Your Ride®

Questions? Call us at: 1 (800) 382-1388 M-TH 8:30AM-5:30PM / FR 9:30AM-5:30PM EST